

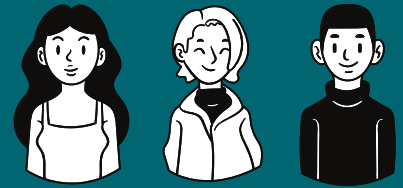
JOB DESCRIPTIONS

STUDENT LEADER ROLES



JOB DESCRIPTIONS

All sabbatical officers will:



- Work at all times within relevant legislation as well as structures, policies and procedures.
- Work co-operatively with other Union staff and Officers, as well as relevant external organisations.
- Adhere to the highest standards, especially of customer service and safety.
- Seek to continually develop and improve Union facilities and services.
- Keep up to date with sector developments, developments in the local community, and students' views/needs, where necessary undertaking market research to generate such information.
- Undertake necessary training and to attend all meetings as requested.
- Promote a positive and professional image of the Roehampton Students' union (RSU) to its members, customers, stakeholders and other external people.
- Positively contribute to the organisation's ethical and environmental ethos.
- Perform any other additional reasonable duties as deemed appropriate.

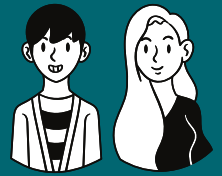


RSU President:



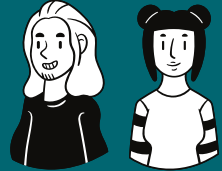
- Sit and represent students on University Council, University Senate, and all other appropriate committees with a Union seat and approval of Executive Committee.
- Chair the Union's Board of Trustees.
- Responsible for coordinating and chairing Presidents' Committee meetings.
- Be the prime representative of the Union and seek to involve as many students with the Union as possible.
- In conjunction with the Chief Executive, lead on the long-term planning of the Union to enhance engagement and improve the overall student experience.
- Be the public face and promote the vision, strategy and policies of the Union.
- Be the lead Officer Trustee responsible for the liaison on behalf of the Union with any affiliated organisations or bodies, and to act as the principal spokesperson.
- Plan and deliver campaigns related to overall student engagement in their communities and improving student life alongside supporting other Officer Trustees deliver their campaigns.
- Be one of the Union's NUS Representatives and represent the Union at NUS conferences, events and activities.

🔍 Vice President Education: 🎤



- Present ideas to the University on how the academic experience and student outcomes can be improved based on evidence-based feedback from students and academic representatives.
- Sit and represent students on university education, academic, and other relevant committees to ensure the student voice is heard.
- Chair focus groups as necessary to support the collation of informed student feedback relating to students' academic experience and student outcomes.
- Work to improve and support student academic representation systems and set up initiatives to keep them engaged.
- Lead campaigns relating to academic issues, improving the academic experience, and improving the University of Roehampton.
- Be the lead Officer Trustee responsible for academic-based campaigns, academic quality, and standards-based initiatives, such as National Student Survey (NSS), Teaching Excellence Framework (TEF), and other education student voice initiatives.
- Act as the Deputy Chair of Presidents' Committee.
- Be one of the Union's NUS Representatives and represent the Union at NUS conferences, events and activities.

🔍 Vice President Welfare: 🎤



- Present ideas to the University on how student support can be improved based on evidence-based feedback from students and student representatives.
- Sit and represent students on relevant University committees and working groups to ensure the voices of students are heard.
- Develop, promote, and lead campaigns which support and encourage student wellbeing.
- Lead student welfare campaigns, with the support of other Officer Trustees and student representatives.
- Promote and direct students to the University support services, respecting confidentiality at all times.
- Develop understanding and strong relationships of other University support services to advocate student welfare and safety.
- Encourage and support students to participate in the Union, student activities, and the University.
- Develop strong relationships with external stakeholders to advocate student welfare and safety.
- Be one of the Union's NUS Representatives and represent the Union at NUS conferences, events and activities.

Colleges: Digby Stuart, Froebel, Southlands, Whitelands



College President



- Be the prime college representative within the Union and seek to involve as many students with the Union and College as possible;
- Attend and contribute to meetings of Presidents' Committee, which includes receiving campaign ideas, identifying student groups to gather feedback, and determining if ideas have insight-backed student interest;
- Establish and maintain relationships with members of staff within their respective college, including the Head of College, College Life Development Officer, and Student Wellbeing Officer;
- Strengthening the partnerships between their respective college with the Union and other colleges;
- Work closely with college management to ensure that the student voice is represented in all college-based discussions and decisions;
- Support the creation and maintenance of the respective College Network



Deputy College President



- Work together with the College President, as a college representative within the Students' Union and seek to involve as many students with the Students' Union and College activities and events as possible.
- Work together with College President to represent the voice of students, including: receiving campaign ideas, identifying student groups to gather feedback, and determining if ideas have insight-backed student interest, which the College President will then present at Presidents' Committee.
- Be the lead representative of the College student network.
- Be the lead representative for College based events & activities such as College Cup and other initiatives
- Work in partnership with the RSU by promoting RSU events & activities (both student and organisation led); encouraging students to engage with RSU Societies and encouraging student participation in Student Networks.
- Alongside the College President, build partnerships and develop relationships with other Colleges to form an inter College community.
- Meet regularly with your College President and the Representation Coordinator to discuss ideas and provide updates on campaigns, activities, or events.
- Provide regular updates to students by writing blogs, articles and creating posts for the RSU's social media and website to communicate with students within their respective college and the wider membership to close the feedback loop.